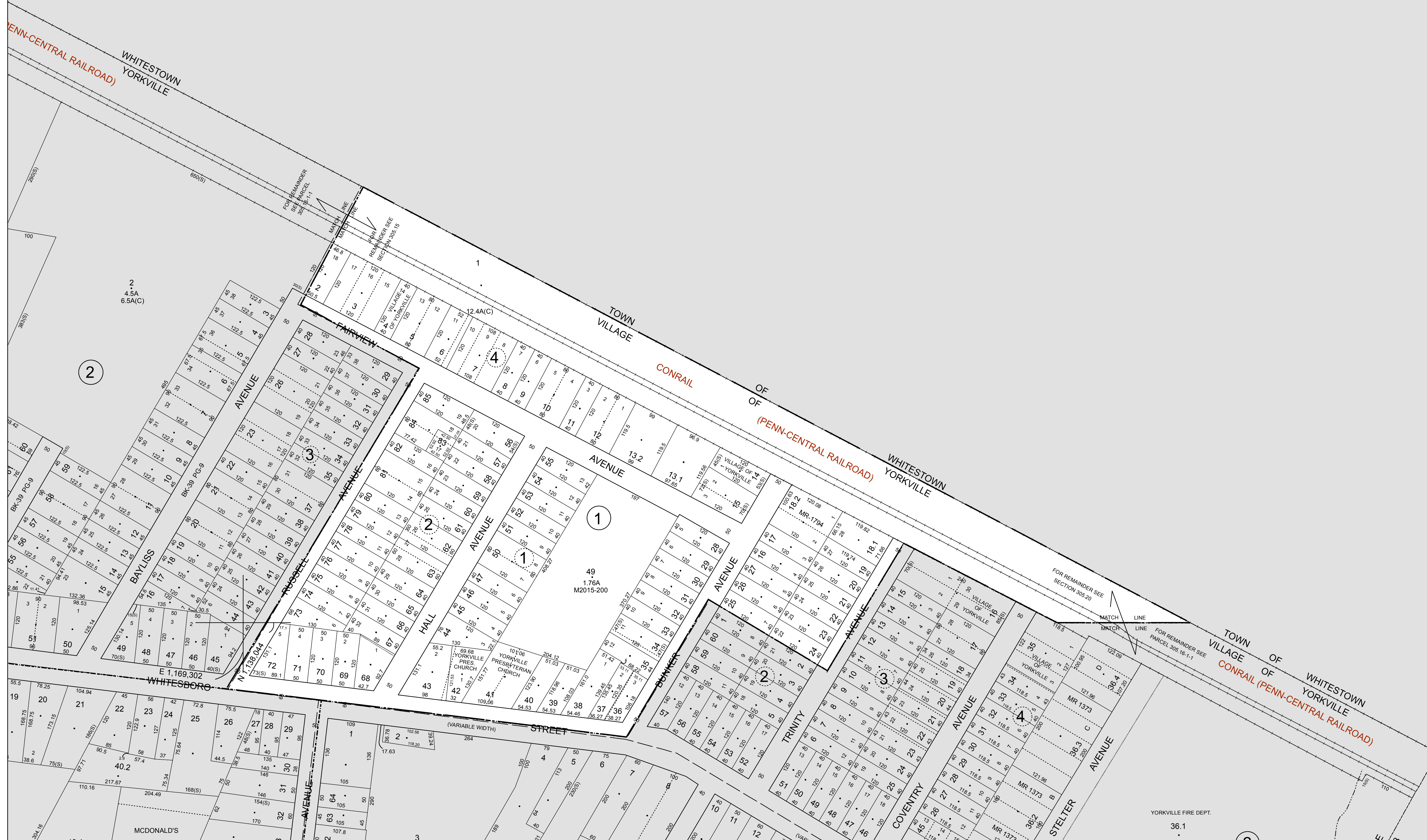


N 1,140,044

E 1,169,302

N 1,140,044

E 1,172,302

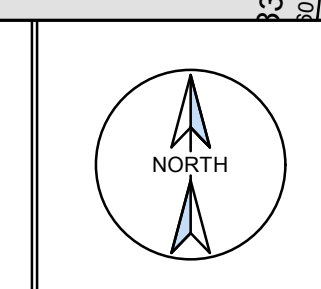


N 1,138,044

E 1,172,302

PREPARED BY

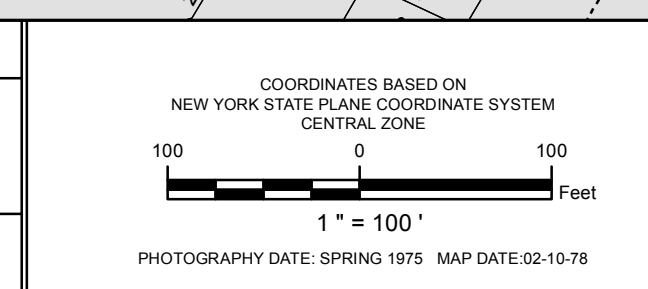
LiRo GIS and Survey, P.C.
A LiRo Group Company



NOTES

THIS MAP WAS PREPARED FOR TAX PURPOSES ONLY AND IS NOT TO BE REPRODUCED OR USED FOR SURVEYING OR CONVEYANCING.

Printed: 12/28/2018



REVISION TABLE

DATE	MADE BY	CHANGES OR ADDITIONS
2/23/08	J.F.K.	MAP UPDATE
7/27/2009	C.K.B.	Map Update
10/17/2011	C.K.B.	Map Update
3/27/2013	C.K.B.	Map Update
4/24/2017	C.K.B.	Map Update

SPECIAL DISTRICTS

SCHOOL	WHITESBORO CENTRAL	SEWER
SCHOOL DISTRICT		
FIRE		
WATER		

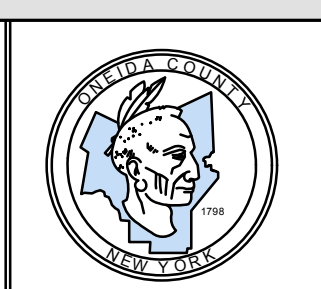
LEGEND

PROPERTY LINE	RAILROAD	DENOTES COMMON OWNER
RIGHT OF WAY LINE	ORIGINAL LOT LINE	SEWER DISTRICT LINE
CORPORATION LINE	BLOCK LIMIT	GREAT LOT NUMBER
TOWN LINE	SCHOOL DISTRICT LINE	DEED LOT NUMBER
COUNTY LINE	WATER DISTRICT LINE	ORIGINAL BLOCK NUMBER
STREAM	FIRE DISTRICT LINE	TAX MAP BLOCK NUMBER

TAX MAP PARCEL NUMBER	89.10-1.5
CALCULATED ACREAGE	9.5(A,C)
DEED ACREAGE	9.5(A)
SCALED DIMENSION	150 (S)
DEED DIMENSION	150
COORDINATE LOCATOR	

SHEET INDEX

305.15	
305.19	305.20



TAX MAP **305.16**

VILLAGE OF YORKVILLE
ONEIDA COUNTY
NEW YORK