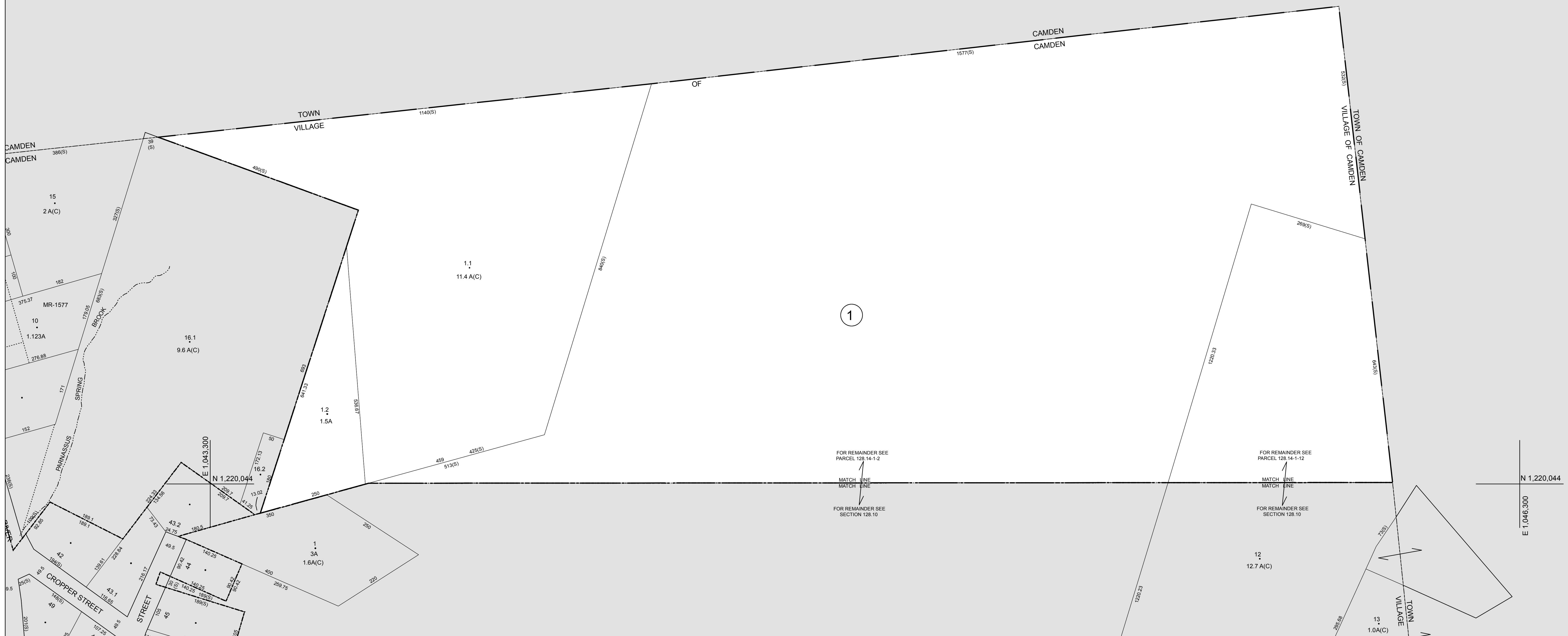
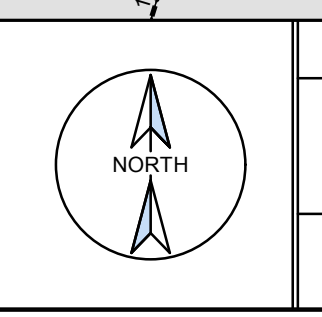


E 1,043,300  
N 1,222,044

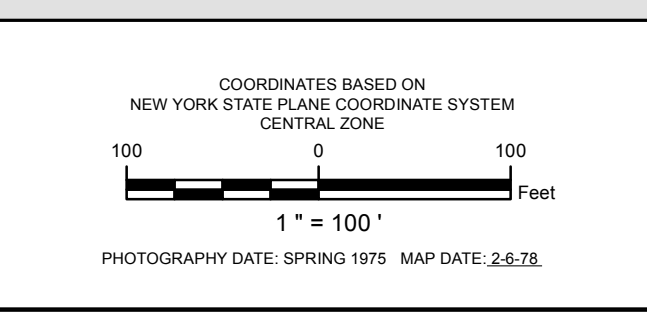
E 1,046,300  
N 1,222,044



PREPARED BY  
**LiRo GIS and Survey, P.C.**  
A LiRo Group Company



**NOTES**  
THIS MAP WAS PREPARED FOR TAX PURPOSES ONLY  
AND IS NOT TO BE REPRODUCED OR USED  
FOR SURVEYING OR CONVEYANCING.  
  
Printed: 11/28/2018



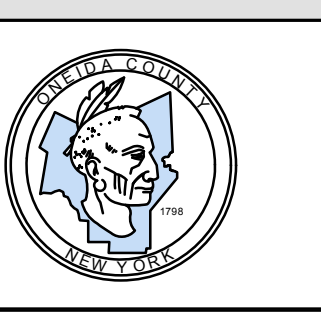
REVISION TABLE		
DATE	MADE BY	CHANGES OR ADDITIONS
8/22/2005	C.K.B. Map Update	
11/26/2007	C.K.B. Map Update	
5-25-10	J.F.K. MAP UPDATE	
4/12/2013	C.K.B. Map Update	

SPECIAL DISTRICTS	
SCHOOL	SEWER
CAMDEN CENTRAL	
SCHOOL DISTRICT	
FIRE: CAMDEN FIRE PROTECTION	
DISTRICT	
WATER:	

LEGEND	
PROPERTY LINE	RAILROAD
RIGHT OF WAY LINE	ORIGINAL LOT LINE
CORPORATION LINE	BLOCK LIMIT
TOWN LINE	SCHOOL DISTRICT LINE
COUNTY LINE	WATER DISTRICT LINE
STREAM	FIRE DISTRICT LINE

LEGEND	
DENOTES COMMON OWNER	TAX MAP PARCEL NUMBER
SEWER DISTRICT LINE	CALCULATED ACREAGE
GREAT LOT NUMBER	DEED ACREAGE
DEED LOT NUMBER	SCALED DIMENSION
ORIGINAL BLOCK NUMBER	DEED DIMENSION
TAX MAP BLOCK NUMBER	COORDINATE LOCATOR

SHEET INDEX	
128.09	128.14



TAX MAP **128.10**  
**VILLAGE OF CAMDEN**  
**ONEIDA COUNTY**  
**NEW YORK**