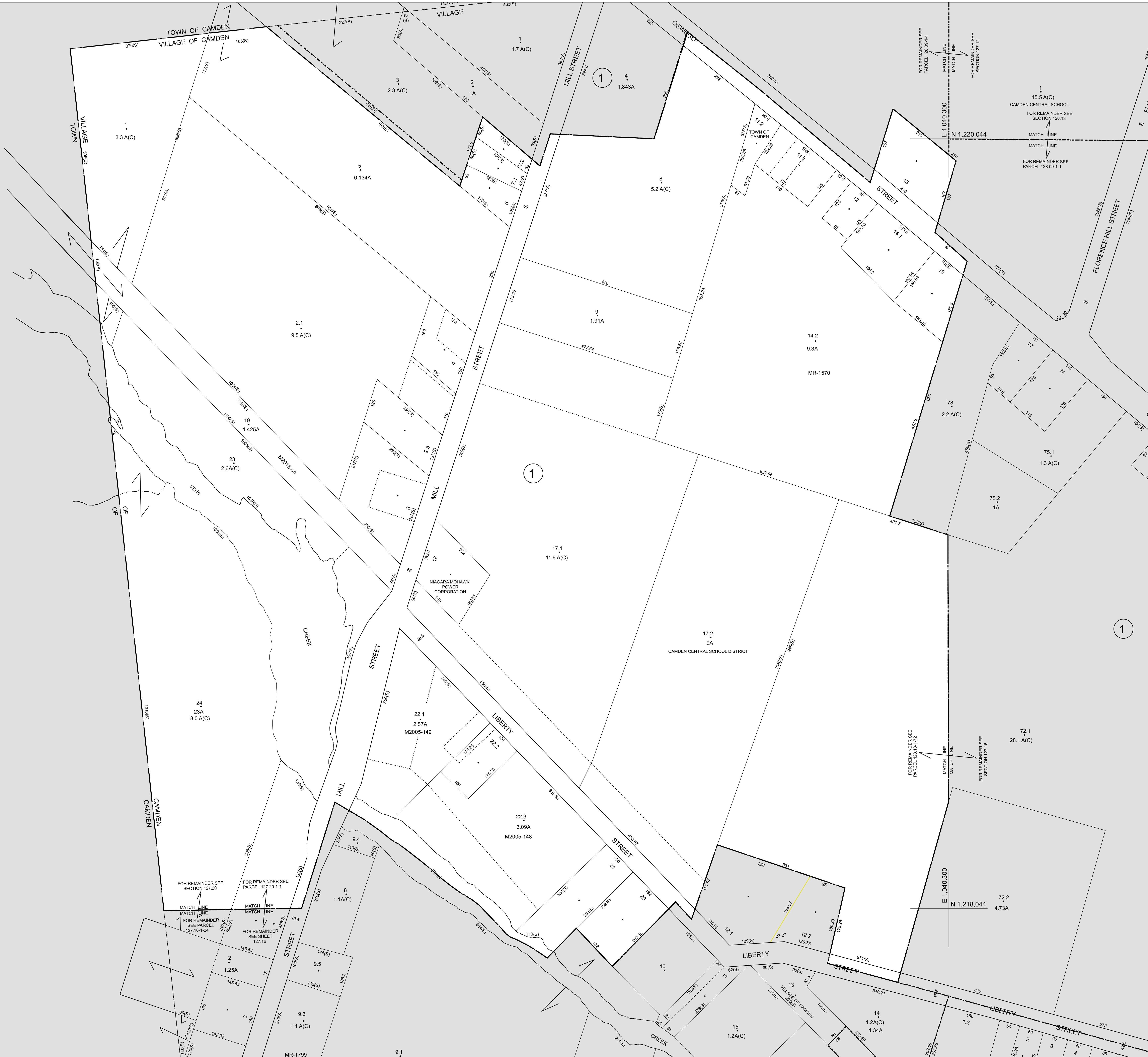
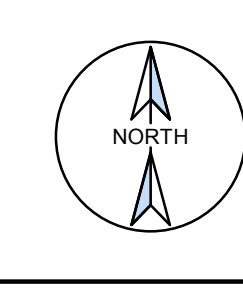


N 1,220,044
E 1,037,300

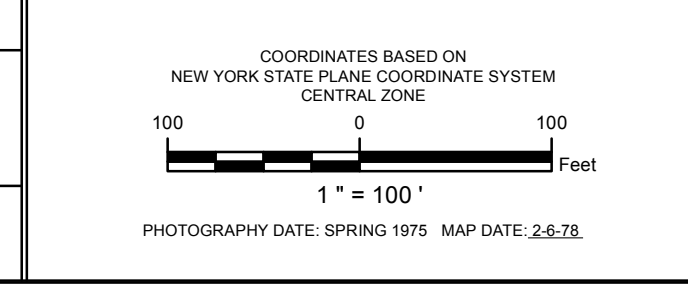
E 1,037,300
N 1,218,044



PREPARED BY
LiRo GIS and Survey, P.C.
A LiRo Group Company



NOTES
THIS MAP WAS PREPARED FOR TAX PURPOSES ONLY AND IS NOT TO BE REPRODUCED OR USED FOR SURVEYING OR CONVEYANCING.
Printed: 11/28/2018



REVISION TABLE

DATE	MADE BY	CHANGES OR ADDITIONS
8/22/2005	C.K.B.	Map Update
9-25-06	J.F.K.	MAP UPDATE
5/02/2007	C.K.B.	Merged Ld 2.2 into 2.1
5-25-10	J.F.K.	ADDITION TO 4 FROM 2.1
4/12/2013	C.K.B.	Map Update

SPECIAL DISTRICTS

SCHOOL: CAMDEN CENTRAL	SEWER:
SCHOOL DISTRICT	
FIRE: CAMDEN FIRE PROTECTION	
DISTRICT	
WATER:	

PROPERTY LINE

RIGHT OF WAY LINE	RAILROAD
CORPORATION LINE	ORIGINAL LOT LINE
TOWN LINE	BLOCK LIMIT
COUNTY LINE	SCHOOL DISTRICT LINE
STREAM	WATER DISTRICT LINE
	FIRE DISTRICT LINE

LEGEND

--- DENOTES COMMON OWNER	--- TAX MAP PARCEL NUMBER
--- SEWER DISTRICT LINE	--- CALCULATED ACREAGE
--- GREAT LOT NUMBER	--- DEED ACREAGE
--- DEED LOT NUMBER	--- SCALED DIMENSION
--- ORIGINAL BLOCK NUMBER	--- DEED DIMENSION
--- TAX MAP BLOCK NUMBER	--- COORDINATE LOCATOR

SHEET INDEX

127.12	128.09
127.20	128.13
127.20	128.17

TAX MAP
VILLAGE OF CAMDEN
ONEIDA COUNTY
NEW YORK

127.16