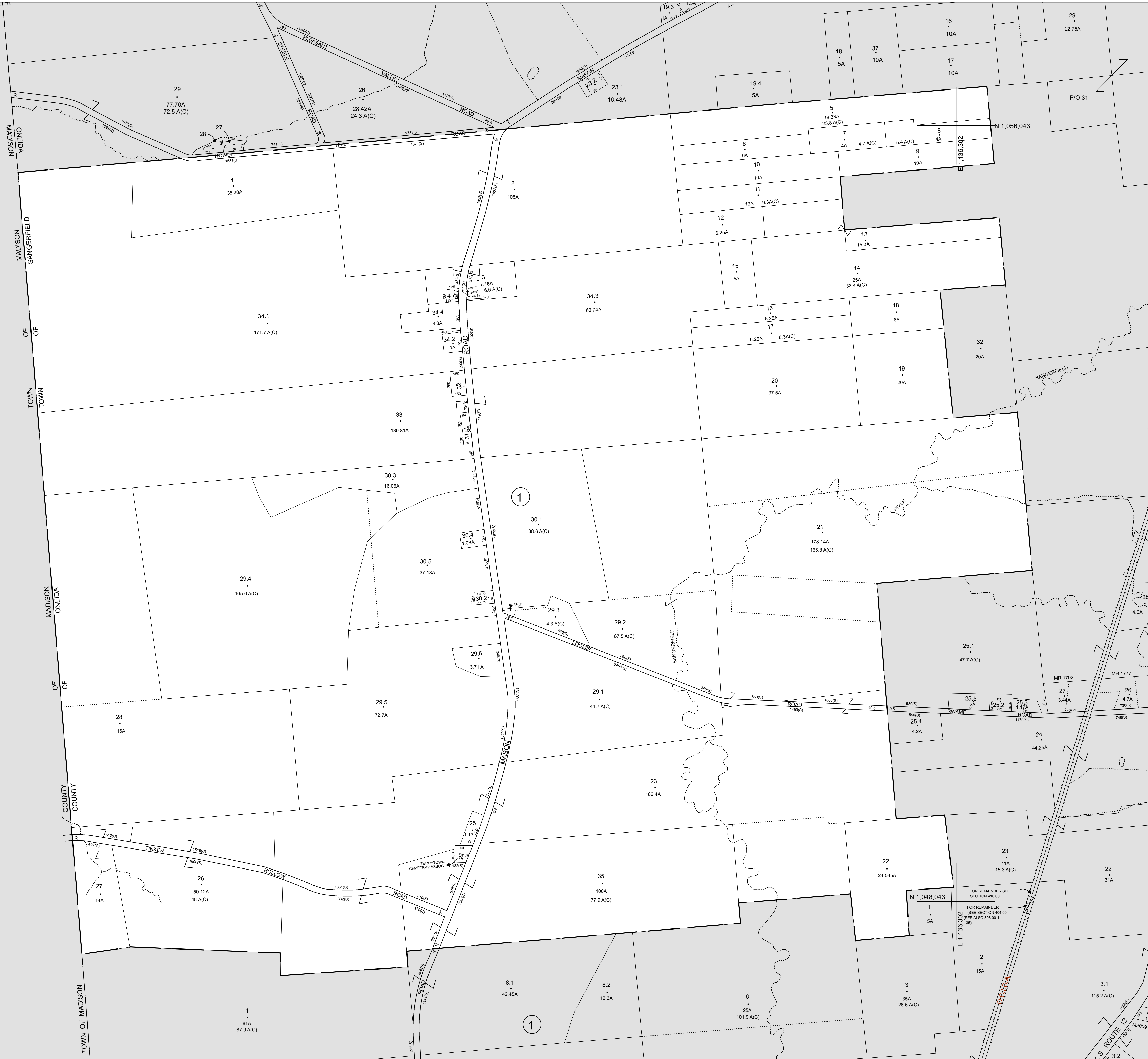
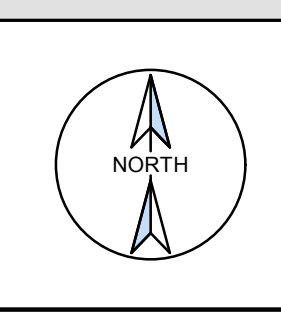


N 1,056,043  
E 1,124,302

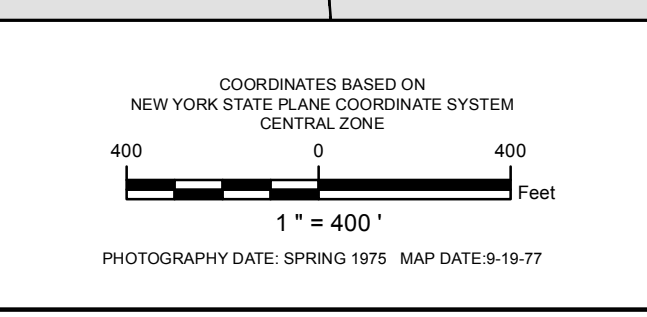
N 1,048,042  
E 1,124,302



PREPARED BY  
**LiRo GIS and Survey, P.C.**  
A LiRo Group Company



**NOTES**  
THIS MAP WAS PREPARED FOR TAX PURPOSES ONLY AND IS NOT TO BE REPRODUCED OR USED FOR SURVEYING OR CONVEYANCING.  
Printed: 12/19/2018



REVISION TABLE	
DATE	MADE BY / CHANGES OR ADDITIONS
11/27/2008	C.K.B. Map Update
7/01/2010	C.K.B. Map Update
7/15/2013	C.K.B. Map Update
11/7/2014	C.K.B. Map Update
6-10-16	J.F.K. SMALL ADDITION TO 29.3

SPECIAL DISTRICTS	
SCHOOL: WATERVILLE C.S. DIST.	SEWER:
FIRE: SANGERFIELD F.P. DIST.	
WATER:	

LEGEND	
PROPERTY LINE	RAILROAD
RIGHT OF WAY LINE	SEWER DISTRICT LINE
CORPORATION LINE	GREAT LOT NUMBER
TOWN LINE	DEED LOT NUMBER
COUNTY LINE	ORIGINAL BLOCK NUMBER
STREAM	TAX MAP BLOCK NUMBER

LEGEND	
DENOTES COMMON OWNER	TAX MAP PARCEL NUMBER
DEED LOT NUMBER	CALCULATED ACREAGE
ORIGINAL BLOCK NUMBER	DEED ACREAGE
TAX MAP BLOCK NUMBER	SCALED DIMENSION
	DEED DIMENSION
	COORDINATE LOCATOR

SHEET INDEX	
397.00	398.00
400.00	410.00



TAX MAP  
**TOWN OF SANGERFIELD**  
ONEIDA COUNTY  
NEW YORK

403.00