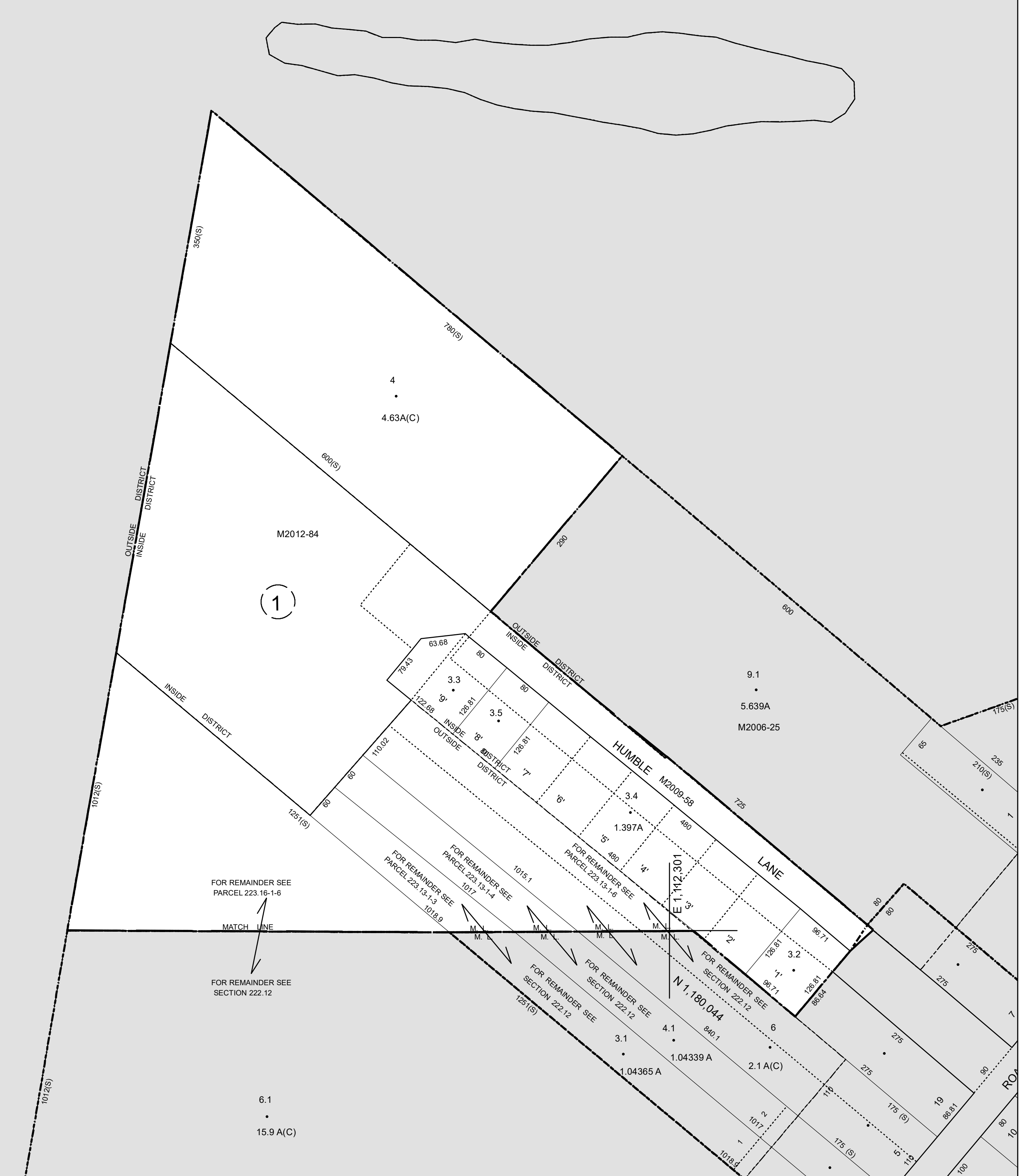


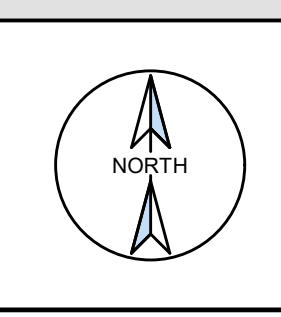
N 1,182,044  
E 1,109,301

N 1,182,044  
E 1,112,301

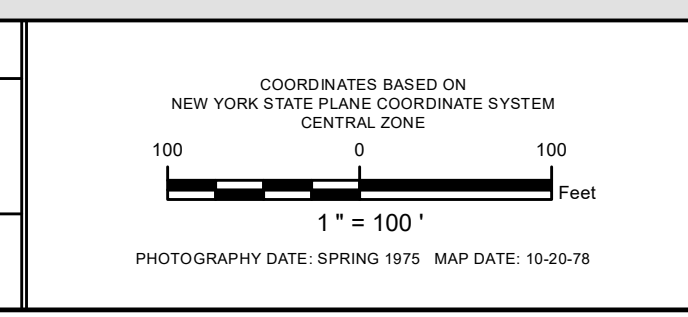
N 1,180,044  
E 1,109,301



PREPARED BY  
**LiRo GIS, Inc.**  
A LiRo Group Company



**NOTES**  
THIS MAP WAS PREPARED FOR TAX PURPOSES ONLY  
AND IS NOT TO BE REPRODUCED OR USED  
FOR SURVEYING OR CONVEYANCING.  
  
Printed: 12/5/2019



**REVISION TABLE**

DATE	MADE BY	CHANGES OR ADDITIONS
10-18-18	JM LIRo	BLK 1 LOT 3.1 ROAD TAKING
3-24-16	JFK	ADDED 3.4, 3.5
1-4-12	JFK	ADDED 3.2, 3.3
9-23-08	JFK	MAP UPDATE
12/14/2006	CKB	Map Update

**SPECIAL DISTRICTS**

SCHOOL: ROME SCHOOL DISTRICT	SEWER:
FIRE: ROME FIRE DISTRICT	
WATER:	

**LEGEND**

PROPERTY LINE	RAILROAD	DENOTES COMMON OWNER
RIGHT OF WAY LINE	ORIGINAL LOT LINE	SEWER DISTRICT LINE
CORPORATION LINE	BLOCK LIMIT	GREAT LOT NUMBER
TOWN LINE	SCHOOL DISTRICT LINE	DEED LOT NUMBER
COUNTY LINE	WATER DISTRICT LINE	ORIGINAL BLOCK NUMBER
STREAM	FIRE DISTRICT LINE	TAX MAP BLOCK NUMBER

**TAX MAP PARCEL NUMBER** 89.10-1.5  
**CALCULATED ACREAGE** 9.5A(C)  
**DEED ACREAGE** 9.5A  
**SCALED DIMENSION** 150 (S)  
**DEED DIMENSION** 150  
**COORDINATE LOCATOR** \*

**SHEET INDEX**

223.00	223.05
222.00	223.09
222.16	223.13



TAX MAP  
**CITY OF ROME**  
**ONEIDA COUNTY**  
**NEW YORK**

**222.12**