

Oneida County

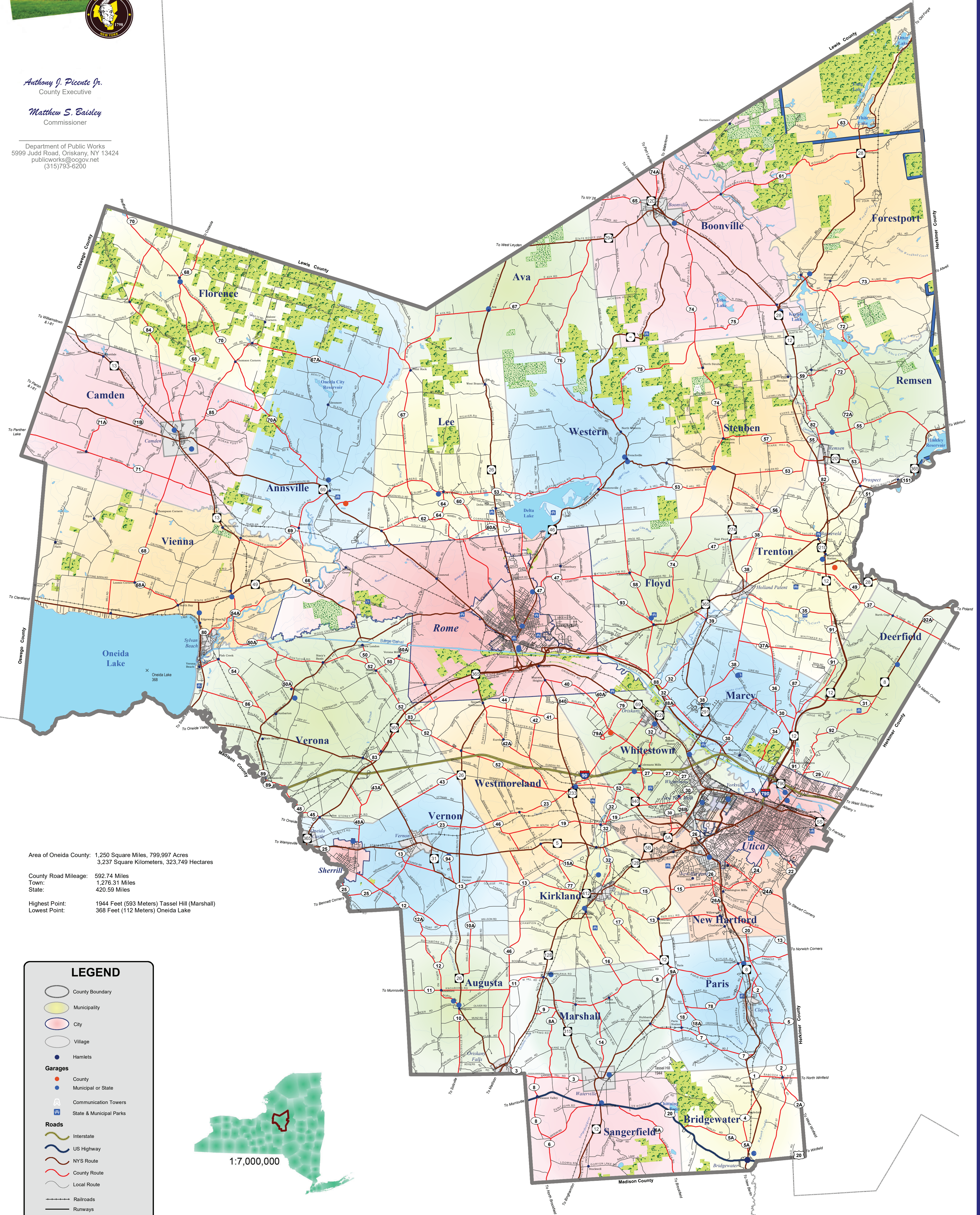
NEW YORK



Anthony J. Picente Jr.
County Executive

Matthew S. Basley
Commissioner

Department of Public Works
5999 Judd Road, Oriskany, NY 13424
publicworks@ocgov.net
(315)793-6200



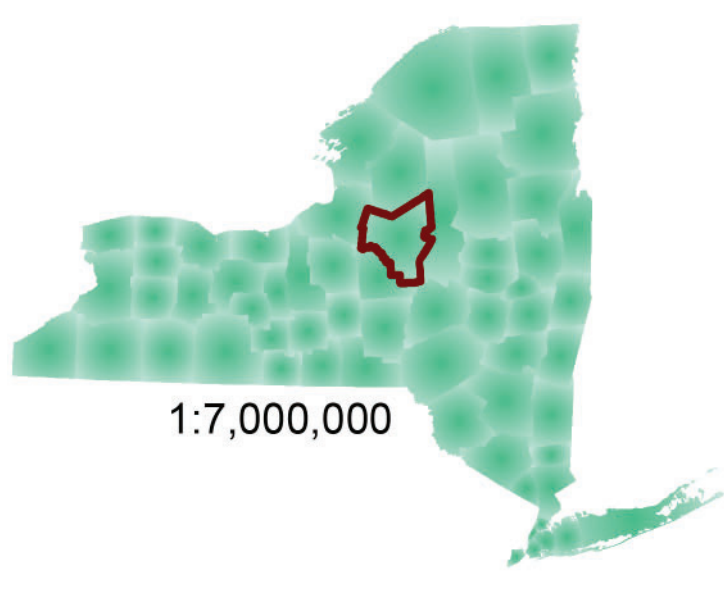
Area of Oneida County: 1,250 Square Miles, 799,997 Acres
3,237 Square Kilometers, 323,749 Hectares

County Road Mileage: 592.74 Miles
Town: 1,276.31 Miles
State: 420.59 Miles

Highest Point: 1944 Feet (593 Meters) Tassel Hill (Marshall)
Lowest Point: 368 Feet (112 Meters) Oneida Lake

LEGEND

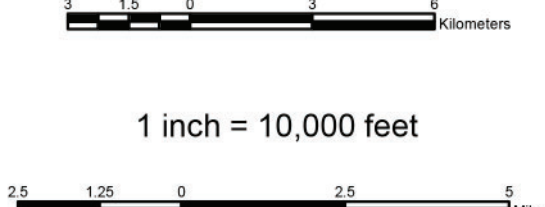
- County Boundary
- Municipality
- City
- Village
- Hamlets
- Garages**
 - County
 - Municipal or State
 - Communication Towers
 - State & Municipal Parks
- Roads**
 - Interstate
 - US Highway
 - NYS Route
 - County Route
 - Local Route
 - Railroads
 - Runways
- State Lands
- Adirondack State Park Boundary
- Water
- Streams



1:120,000

1 centimeter = 1,200 meters

1 inch = 10,000 feet



Copyright, County of Oneida, 2019
Utica, New York 13501

This information was compiled for planning purposes and may not be reproduced or transmitted for commercial purposes or for any other purpose without the prior authorization of Herkimer Oneida Counties Comprehensive Planning Program (HOCPPP). HOCPPP shall not be liable for misuse or misrepresentation of this information. HOCPPP makes no claim as to the accuracy or completeness of the data contained herein.

